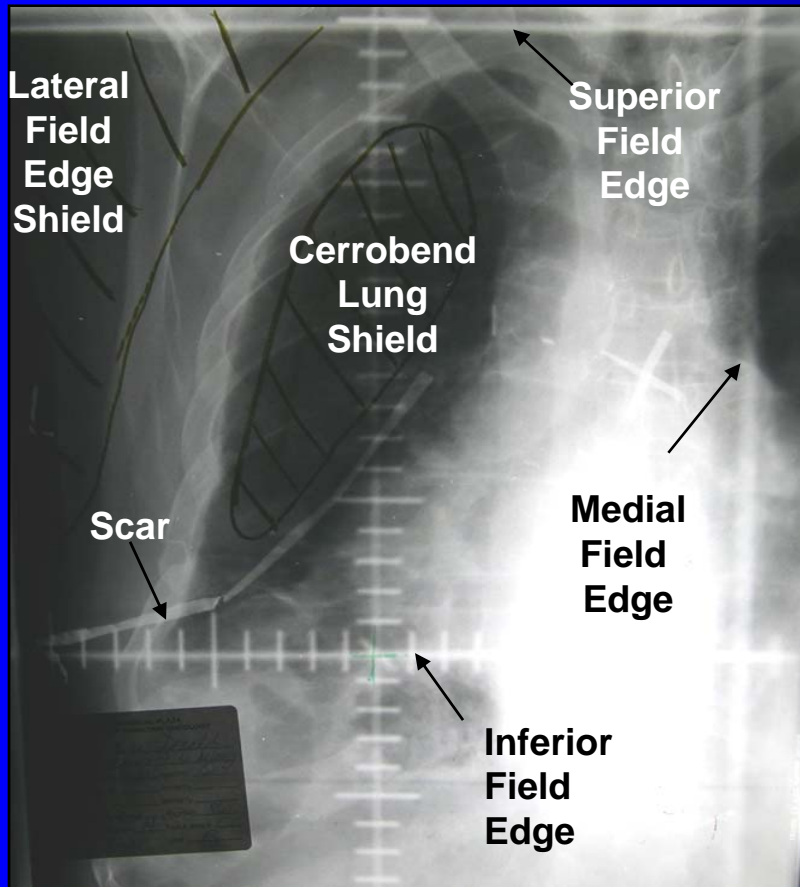
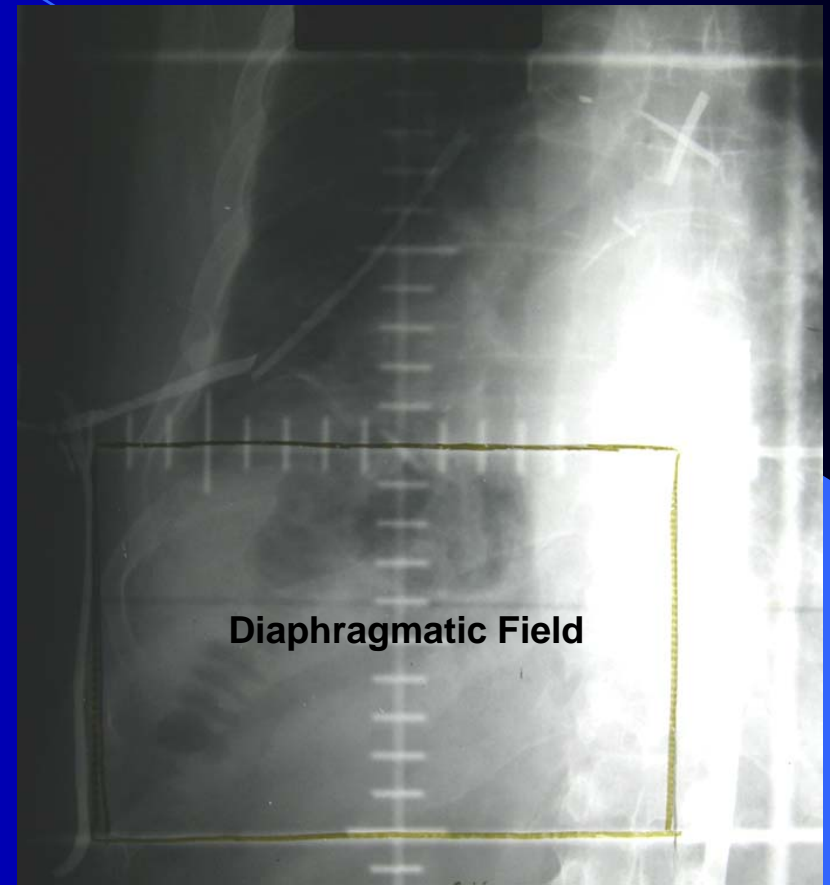


Radiation: Fields



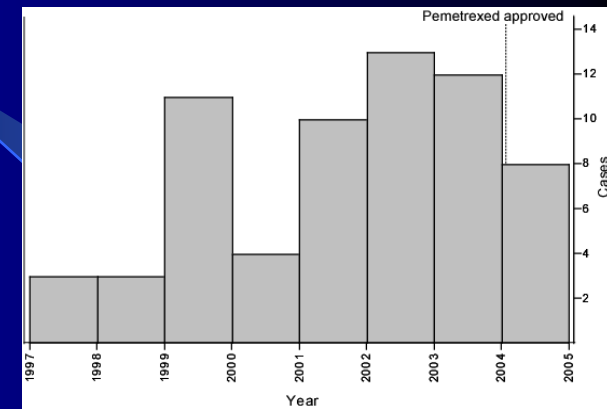
AP-PA photon field



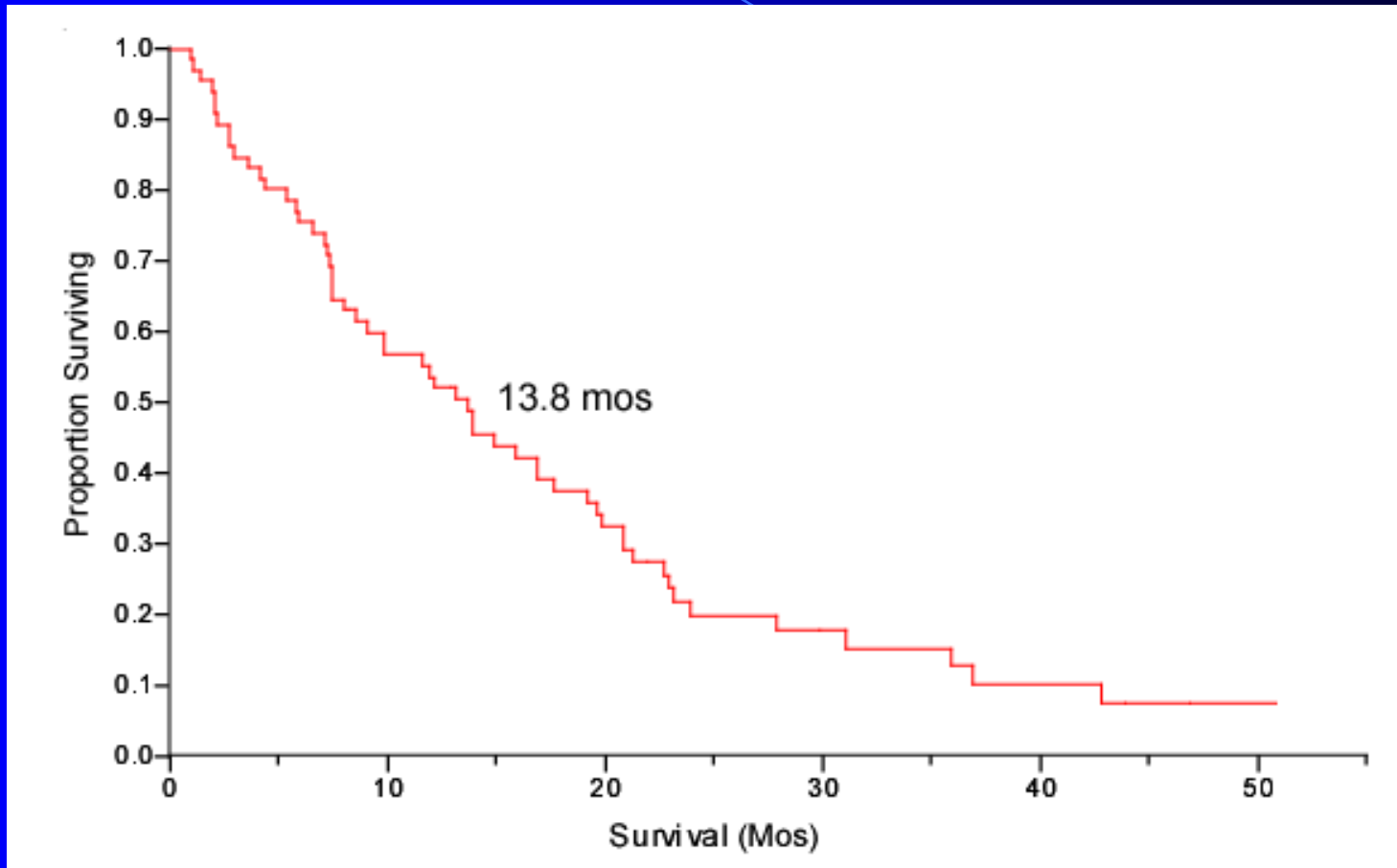
PA electron beam field

Mesothelioma: Clinical Experience

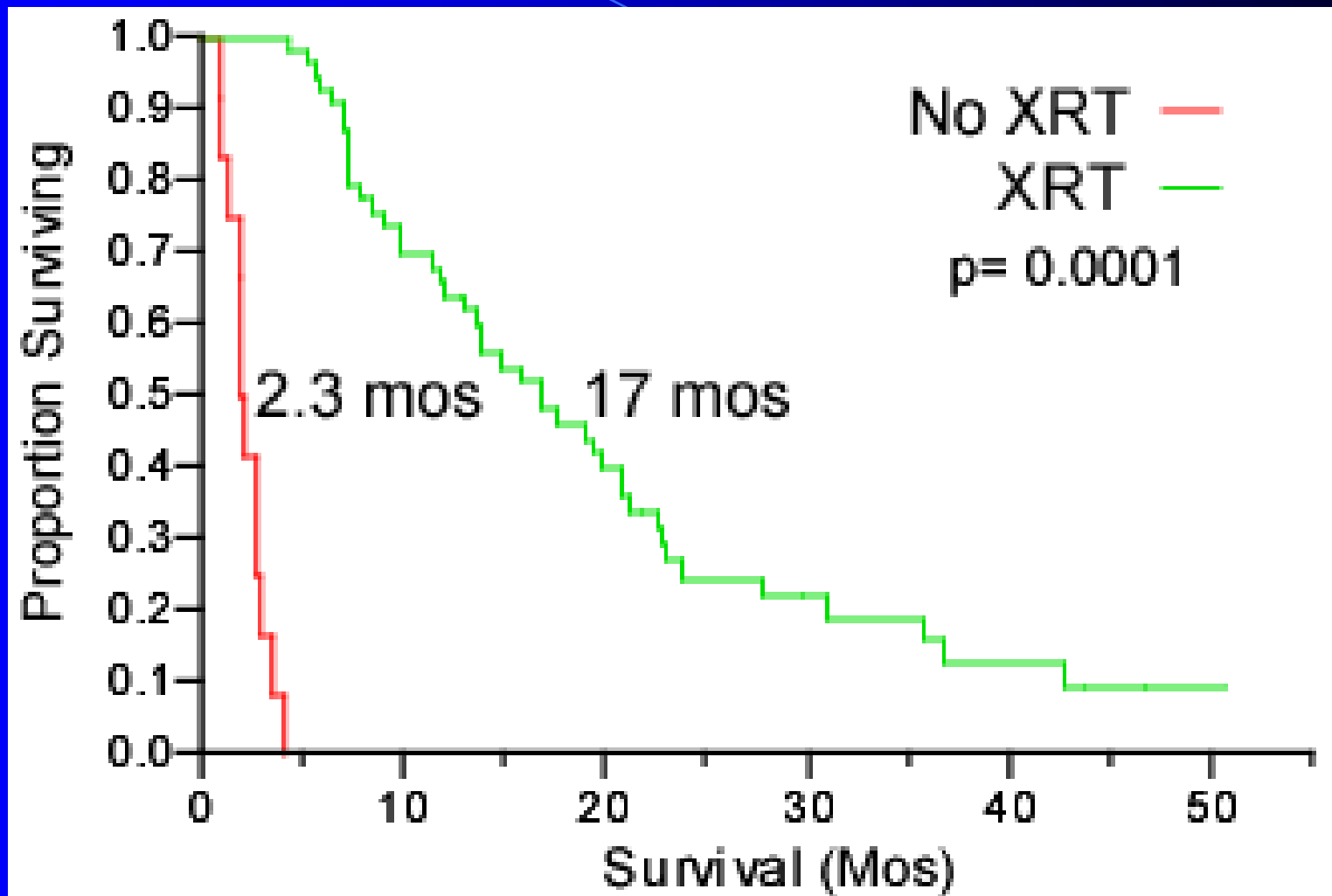
- 139 Patients evaluated at UCLA for mesothelioma between Sept 1997 and Sept 2004
- 65 Patients underwent attempted P/D
 - 94% had “complete” gross resection
 - 0% perioperative deaths (<30 days)
- 47 male (72%) and 18 female (28%)
- Epithelioid in 39 (60%), biphasic in 22 (33.8%) and sarcomatoid in 4 (6.2%)
- Right side in 37 (57%) and left in 28 (43%)
- Stage I/II in 34 (52.3%) and III/IV in 31 (47.7%)
- 53 Patients (81.5%) received full dose (45 Gy) radiation



Overall Survival: All Patients



Survival +/- Radiation



Survival + XRT

Stage Groupings and Histology

